



Start Here

Components



2 Outlet Filters



Outlet Filter Holder



Dispensing Spigot

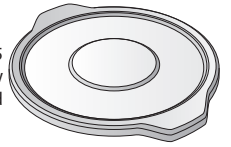


5 Cold Pro™ Paper Filters
+
2 Smart Brew™ PLA Filters

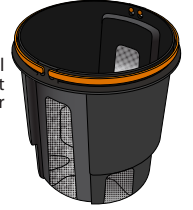


Cold Pro™ Cleaner

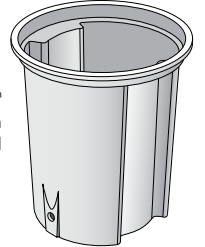
Cold Pro™ 5 Gallon Brew Vessel Lid



Stainless Steel Permanent Filter



Cold Pro™ 5 Gallon Brew Vessel



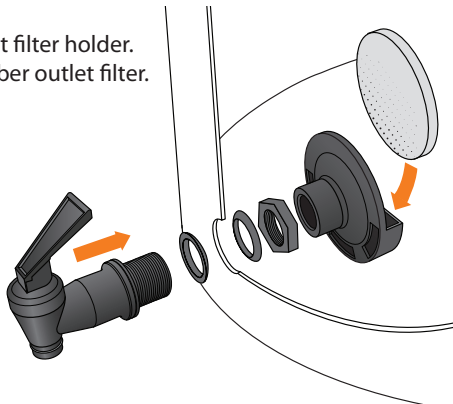
Assemble Cold Pro 4™ System

Note: Detailed assembly instructions can be found in the owner's manual.

- Install the spigot with one rubber washer on each side of the bucket wall.
- Secure the spigot with the hex nut.

Optional addition:

- Attach the outlet filter holder.
- Insert the polyfiber outlet filter.



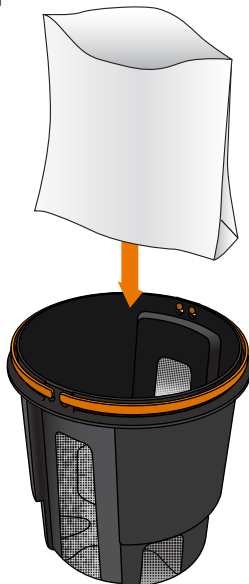
1 Before You Begin

Determine the combination of filters desired.



2 Insert paper filter

- The paper filter is optional, but highly recommended for easier clean up and better refinement.
- Do not fold the orange handles over the paper filter.

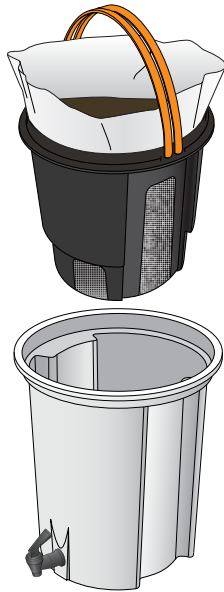


3 Add coarsely ground coffee to the permanent filter and the paper filter (paper filter is optional).



4 Position and turn

the permanent filter so it rests below the rim of the bucket.



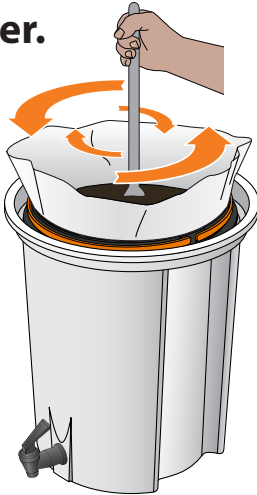
5 Add water.

- Do not fill above the inner supports of the bucket to prevent grounds from overflowing during the bloom.
- Allow to bloom for 5-10 minutes, then stir to saturate grounds.
- The recipe and ratio is decided upon by the user.
- Brewista encourages experimentation to develop the best cold brew possible. Visit mybrewista.com for recommended recipes.



6 Stir grounds and water.

Repeat stirring after one hour to ensure complete saturation of the grounds.



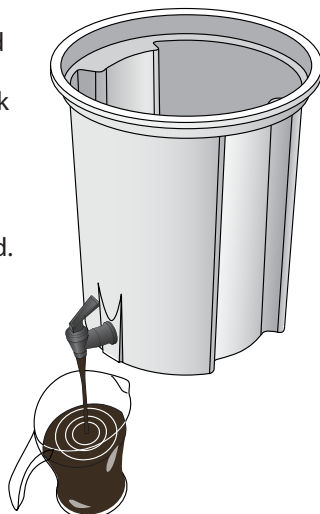
7 Steep Overnight.

Cover with lid. (Steeping time is determined by the user.)



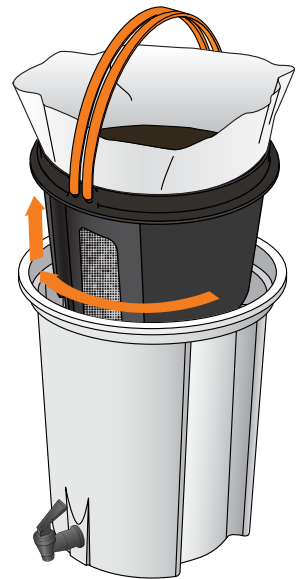
9 After Draining:

- Dispose of the grounds and paper filter (if used).
- Dispense the ready-to-drink cold brew or cold brew concentrate into a serving vessel or airtight storage container.
- Keep cold brew refrigerated.



8 After Steeping:

- Lift the permanent filter with the grounds.
- Twist the permanent filter to align with the supports on bucket.
- Allow the concentrate to drain into the vessel below the filter basket.



- **Brewer patents:**
 - U.S. Patent Numbers D774,352; D779,875; D820,040; 10,016,088
 - CH Patent Number 141968
 - EU Patents 002768572-0001 to -0005
- **Paper Filter patents:**
 - EU Registered Design numbers: 004086379-0001, 004086379-0002, 004086379-0003
 - Chinese Registered Design Patent: 201730141259.2
- **Additional U.S. and International patents pending**

Brewista®

Cold Pro 4™ Commercial Cold Brew System

BCP4PRMSYS

1133 W. 27th Street, Cheyenne, WY 82001, USA | www.mybrewista.com

Toll Free in North America: 888-538-8683 | Local: 307-222-6086