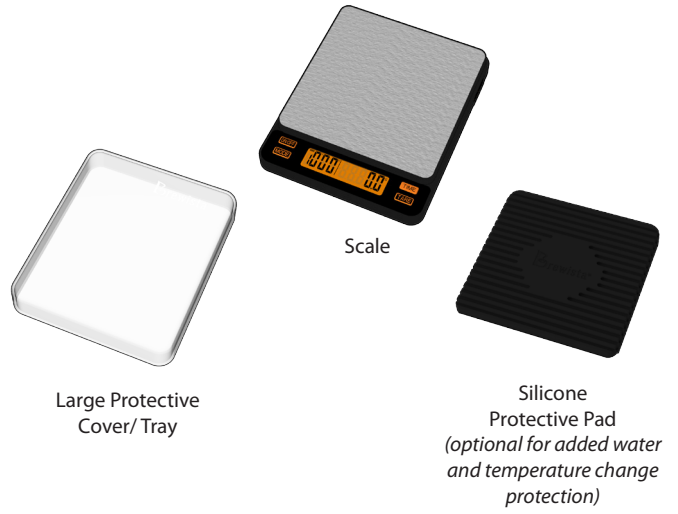




Scan for
Instructional video



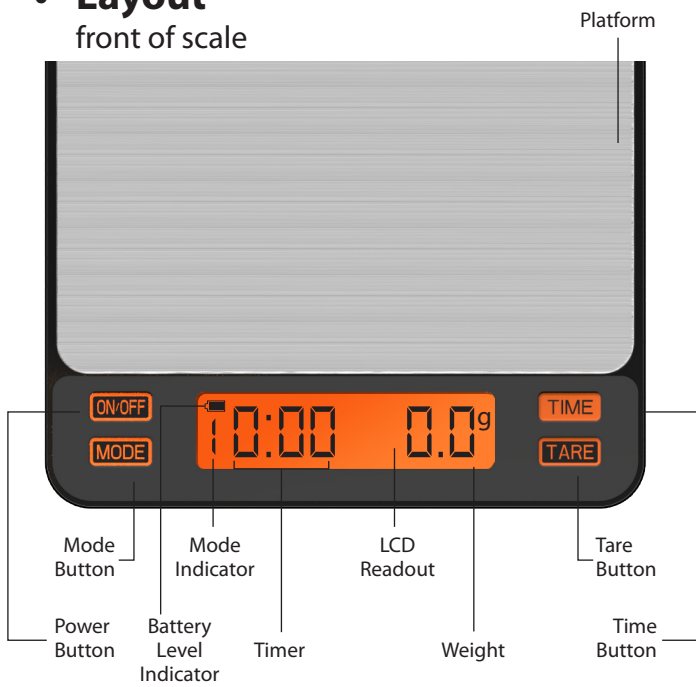
• What's in the box?



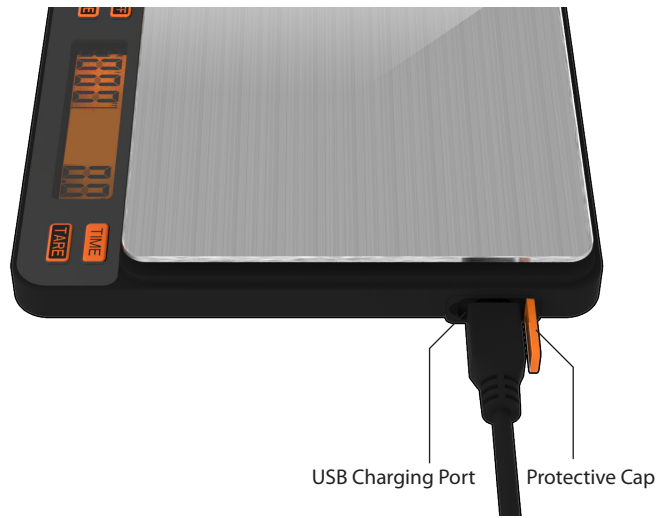
QUICK START GUIDE

Start Here

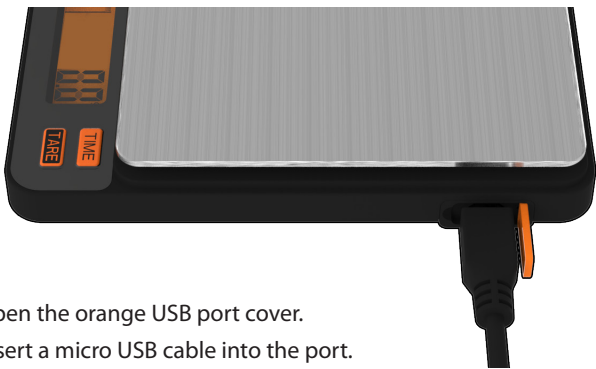
• Layout front of scale



• Layout side of scale

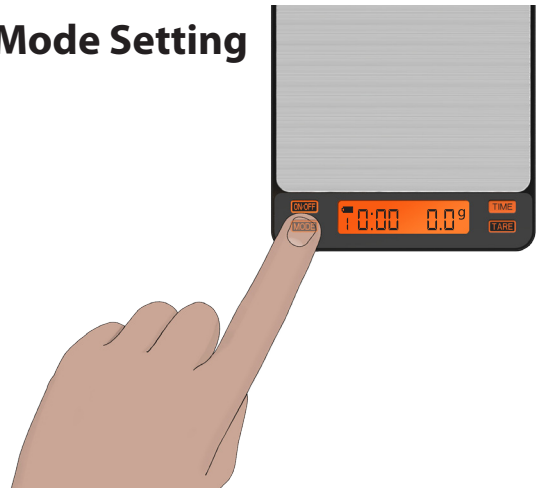


• Charging the Battery



- Open the orange USB port cover.
- Insert a micro USB cable into the port.
- Insert the large end of the USB cable into a computer, charging port or other device for charging your scale's battery.
- The scale will automatically turn on to verify that the charging cord is correctly connected. We recommend turning off the scale manually at this time to reduce charging time.
- When charging is finished remove USB cable from scale and replace the port cover. **Do not overcharge battery.**

• Mode Setting



- Press "ON/OFF" button.
- Press MODE button.
- The display will read, "1", "2", "3", "4", "5", or "6".
- Press the MODE button again to toggle through these six modes.

• Mode 1 fully manual



- Mode indicator displays "1" on the left of the LCD.
- No automatic functions.
- User TARES and starts timer by pressing appropriate buttons.
- Timer is paused and restarted by pressing TIME button again.

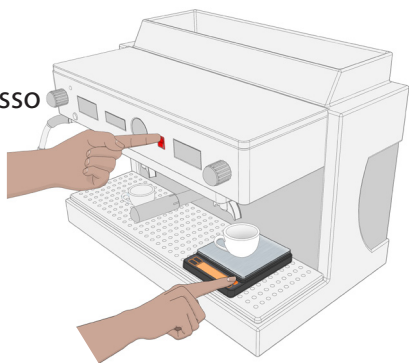
• Mode 2 for making espresso *(Auto-tare and Auto-timer with immediate timer start)*



- Mode indicator displays a "2" on the left of the LCD.
- Place cup on platform.
- Display will flash once.
- Weight will automatically TARE.
- Timer begins to count up.
- Weight is displayed as added.
- After cup is removed, the last time and weight are displayed for 5 seconds. Time then returns to 0'00" and weight returns to 0.0g.

• Mode 3

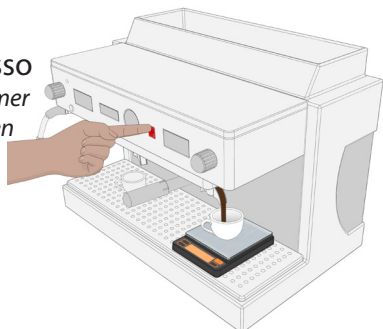
for making espresso
(Auto-tare and manual timer start)



- Mode indicator displays “3” on the left of the LCD.
- Place cup on platform.
- Weight will automatically TARE.
- Press start button on espresso machine and TIME button on scale simultaneously.
- Timer begins to count up.
- Weight is displayed as added.
- After cup is removed, last time and weight are displayed for 5 seconds. Time then returns to 0’00” and weight returns to 0.0g.

• Mode 5

for making espresso
(Auto-tare and Auto-timer with timer starting when liquid hits the cup)



- Mode indicator displays “5” on the left of the LCD.
- Place cup on platform.
- Weight will automatically TARE.
- When liquid hits the cup, the timer automatically starts to count up.
- Weight is displayed as added.
- After cup is removed, last time and weight are displayed for 5 seconds. Time then returns to 0’00” and weight returns to 0.0g.

• Mode 4

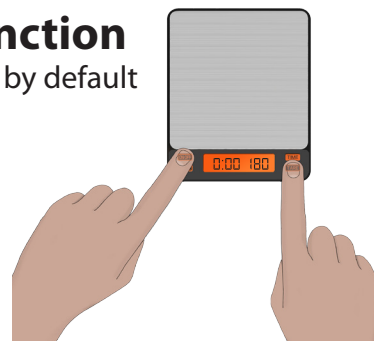
for making espresso
(Auto-tare only; timer is not active)



- Mode indicator displays “4” on the left of the LCD.
- Place cup on platform.
- Weight will automatically TARE.
- Weight is displayed as added.
- After cup is removed, last weight is displayed for 5 seconds. Weight then returns to 0.0g.

• Auto-off Function

set to 180 seconds by default



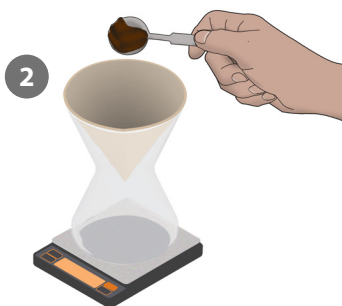
- Turn off the scale.
- Press and hold ON/OFF button.
- While holding the ON/OFF button, press the TARE button 4-5 times quickly until “180” is displayed.
- Release both buttons.
- Press the MODE button to switch between “0/60/120/180” seconds. (If “0” is selected, the Auto-off function will be disabled.)
- After choosing desired time, press the ON/OFF button again.
- The display will show “PASS” to confirm this setting.
- The scale will turn off automatically.
- Please note: To keep a longer battery life, please turn off the scale by pressing ON/OFF button after each use.

• Mode 6

pour over brewing



- Mode indicator displays “6” on the left of the LCD.
- Place brewing vessel on platform.
- Weight will automatically TARE.



- Add coffee grounds.
- Adjust amount of coffee grounds.
- Once platform is stable press the TARE button.



- Add water.
- Display will flash once.
- Timer begins to count up.
- Weight is displayed as added.
- After cup is removed, last time and weight are displayed for 5 seconds. Time then returns to 0’00” and weight returns to 0.0g.

• Silicone Pad

Use of the silicone pad is optional. It is included to provide additional water resistance. It also prevents slight weight variations caused by abrupt temperature changes on the platform.



- Place the silicone pad onto the platform with the Brewista logo oriented to be read left to right.
- Ensure that the pad covers the platform completely without interfering with platform travel.
- The silicone pad is dishwasher safe (top rack).

• Washing Instructions



- Wipe scale clean with soft, damp cloth.
- Do not submerge the scale in water. Doing so may require excessive drying time and damage the scale.
- Do not press hard on the platform.
- Dry the exterior of the scale with a soft cloth or leave to dry on a dish rack with the LCD and buttons pointing up.

Brewista®

Smart Scale™ II

BSSRB2

1133 W. 27th Street, Cheyenne, WY 82001, USA | www.mybrewista.com
Toll Free in North America: 888-538-8683 | Local: 307-222-6086